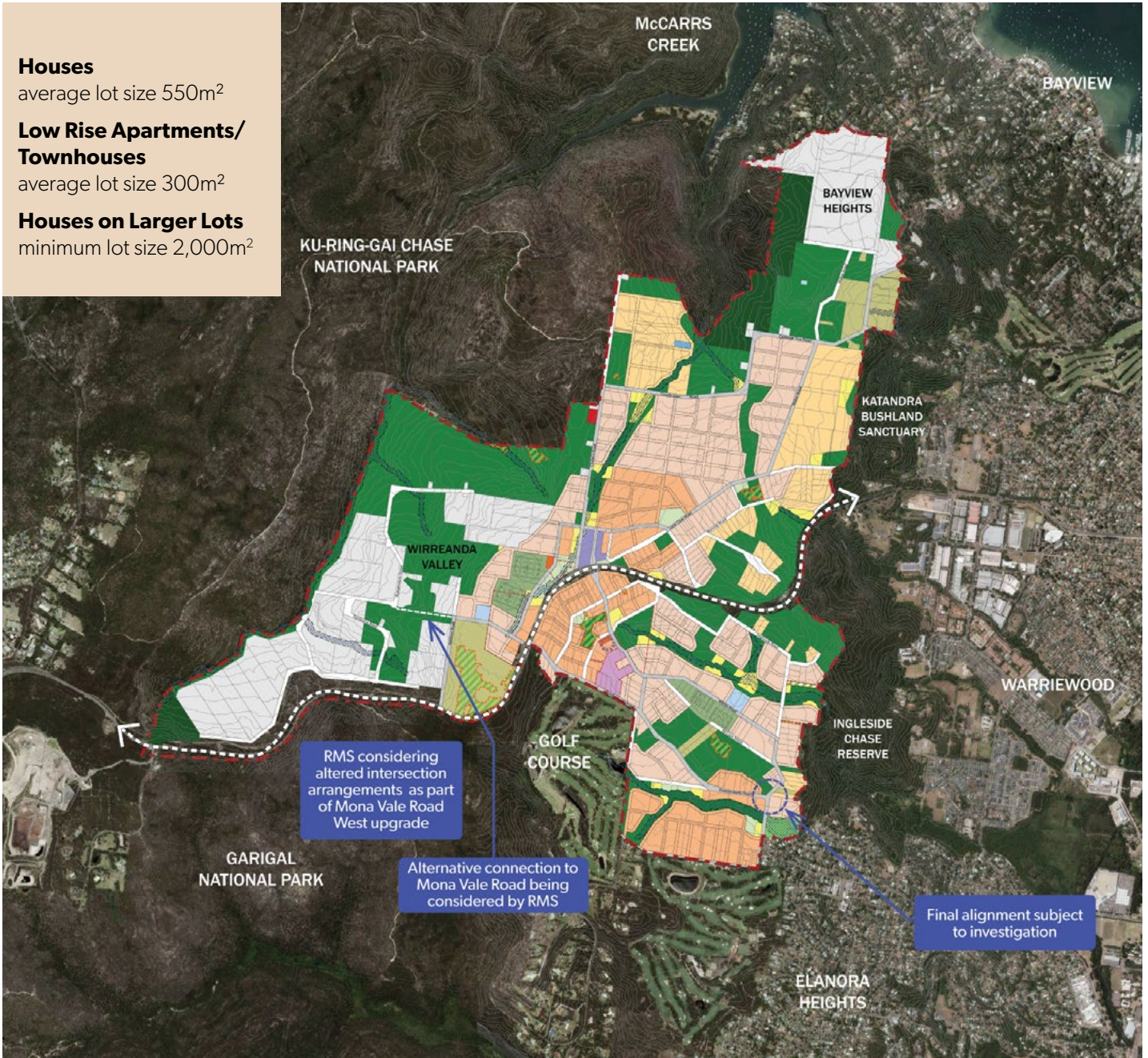


Structure Plan



- Houses**
average lot size 550m²
- Low Rise Apartments/
Townhouses**
average lot size 300m²
- Houses on Larger Lots**
minimum lot size 2,000m²

Key

- | | | | | | |
|--|---|--|-------------------------------------|--|--|
| | Precinct Boundary | | Environmental Conservation | | Water Management |
| | Houses on Larger lots | | Road within Ingleside Chase Reserve | | Water |
| | Houses | | National Park | | Sewer |
| | Low Rise Apartment/
Townhouses (3 storeys) | | Endangered Ecological Community | | Rural Fire Service Station |
| | Environmental Management | | Neighbourhood Centre | | Creek Corridor |
| | Rural | | Proposed School | | Heritage Curtilage |
| | Parks | | Proposed Mona Vale Road Alignment | | Community Centre |
| | Sporting Fields | | | | Preferred Location for Neighbourhood Shops |