



Pittwater Overland Flow Mapping And Flood Study – Volume 2

FINAL

W4936

Prepared for Pittwater Council

October 2013

Cardno (NSW/ACT) Pty Ltd

ABN 95 001 145 035

Level 9 The Forum
203 Pacific Highway
St Leonards NSW 2065
Australia

Telephone: 02 9496 7700

Facsimile: 02 9439 5170

International: +61 2 9496 7700

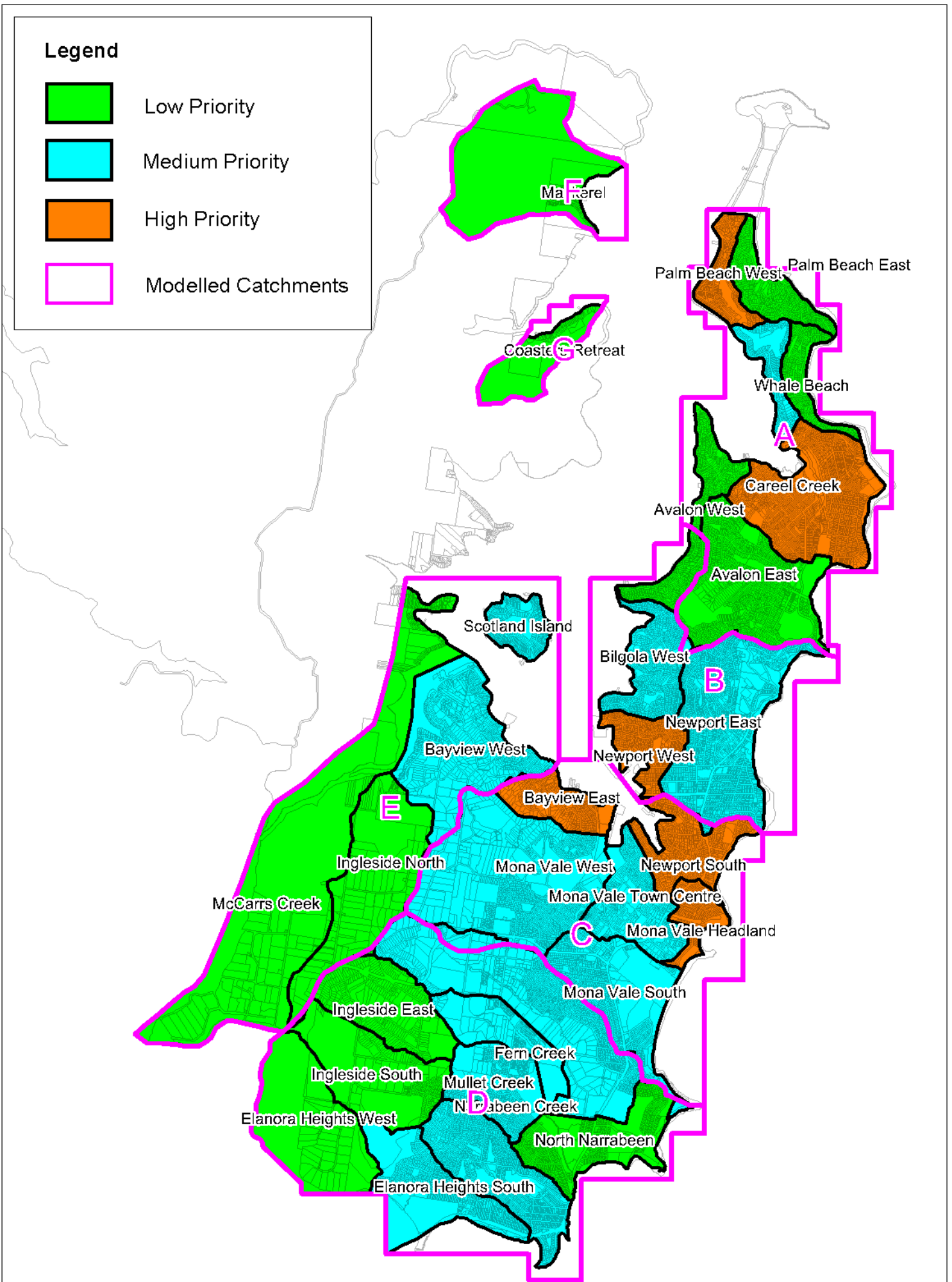
sydney@cardno.com.au

www.cardno.com.au

Report No _____

Document Control:						
Version	Status	Date	Author		Reviewer	
			Name	Initials	Name	Initials
1	Working Paper 1 - Draft	19 March 2012	Tina Fang	TF	Rhys Thomson	RST
1	Working Paper 2 - Draft	31 May 2012	Tina Fang	TF	Rhys Thomson	RST
1	Working Paper 3 - Draft	30 July 2012	Tina Fang	TF	Rhys Thomson	RST
1	Draft Working Paper 4 - Draft	24 August 2012	Tina Fang	TF	Rhys Thomson	RST
1	Draft for Exhibition	3 September 2012	Tina Fang	TF	Rhys Thomson	RST
2	Draft for Exhibition	4 September 2012	Tina Fang	TF	Rhys Thomson	RST
3	Final for Council Approval	11 October 2013	Martin Griffin	MG	Emma Maratea	EM
4	Final	17 October 2013	Martin Griffin	MG	Emma Maratea	ERM

"© 2012 Cardno (NSW/ACT) Pty Ltd All Rights Reserved. Copyright in the whole and every part of this document belongs to Cardno (NSW/ACT) Pty Ltd and may not be used, sold, transferred, copied or reproduced in whole or in part in any manner or form or in or on any media to any person without the prior written consent of Cardno (NSW/ACT) Pty Ltd."



Pittwater Overland Flow Flood study and Mapping

FIGURE - 14.1
PITTWATER LGA
CATCHMENT PRIORITISATION CATEGORIES