

## ACTIONS

### A. SIGNAGE

Signage is to provide corridor / reserve names & directional, compliance & interpretive information as required. Directional signage may include points of interest such as the picnic area, pathway, & existing bridge. (Refer Action 31)

### B. BUSH RESTORATION & HABITAT PROTECTION

Expand the weed eradication & prevention program along South Creek & within the reserve (Refer Action 1).

Undertake an assessment of the reserve to identify potential new areas for bush & habitat restoration. Develop restoration plans for these new areas & any identified endangered communities & remnant habitat areas within the reserve. (Refer Action 2 & 3).

### C. CREEK LINE

Improve & stabilise the creek as outlined in the *Floodplain Risk Management Studies & Plans* & the *Warrigah Creek Management Study* (Refer Action 7).

### D. TRACKS & ACCESS

As part of the shared track network develop a pathway in Lidwina Reserve located on the eastern side of South Creek from Willandra Rd to the pedestrian bridge and then, on the eastern side of the creek from the bridge to the northern reserve boundary. Also widen the existing pathway between Teresa & Lidwina Place. (Refer Action 23 & 25).

### E. PICNIC AREA

Develop a community space or picnic area considering the provision of furniture etc that will create a sense of character, improve safety, access & usability of the area (Refer Action 57).

### F. SHADE TREES

Increase the planting of shade trees. Species to be in accordance with Local Habitat Strategy. (Refer Action 22).

### G. LAND RECLASSIFICATION

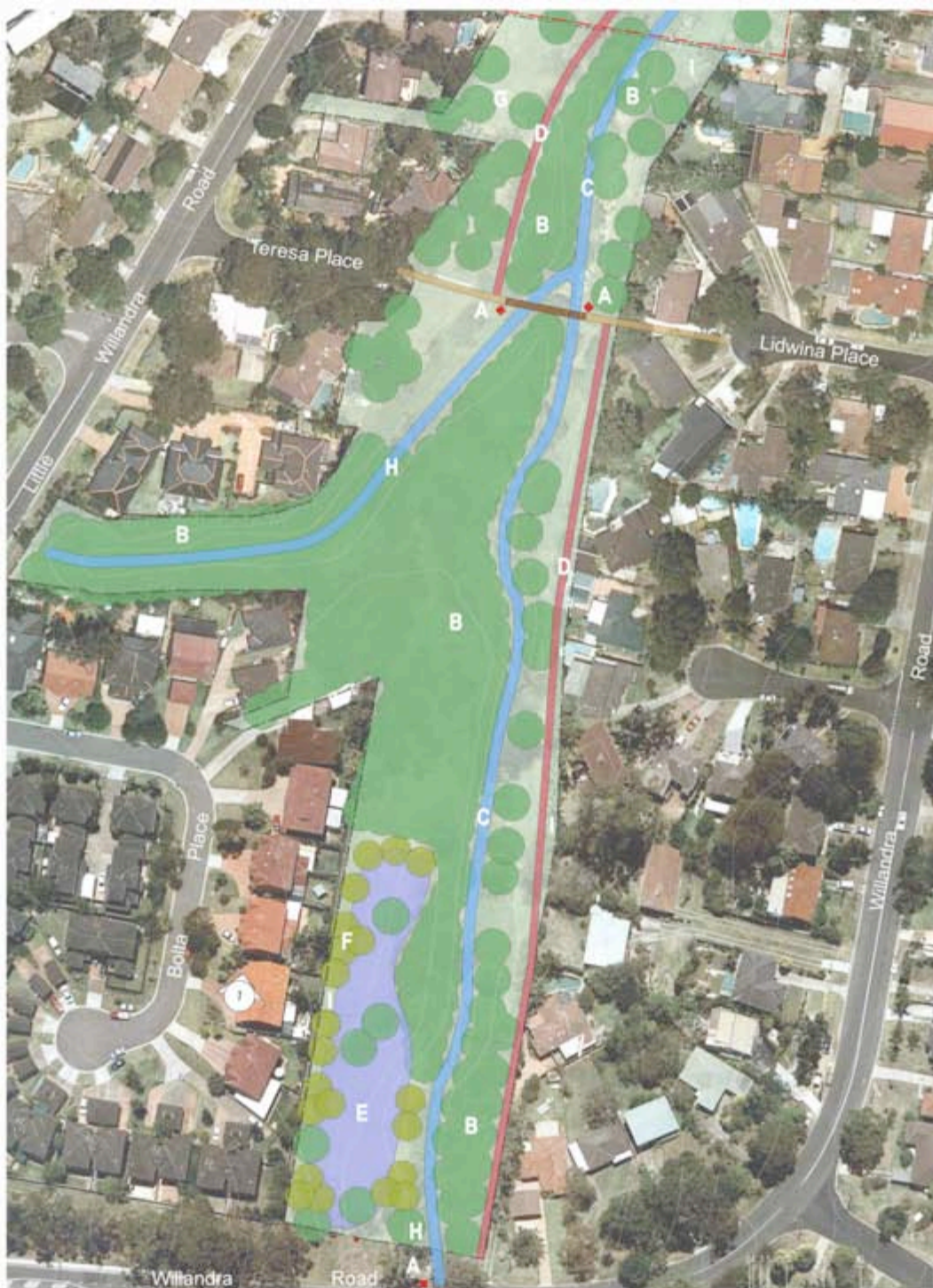
Reclassify a portion of 54 Willandra Road as community land to ensure an adequately wide corridor of open space along South Creek. (Refer Action 12).

### H. FLOOD RISK MANAGEMENT

This area has been identified as requiring works to lower the risk of flooding. The actual works are outlined in the South Creek Floodplain Risk Management Plan (Refer Action 7).

### I. NATURAL AREA BUFFERS

The land is to be managed as a Natural area. All replanting & restoration will be at a measured distance from neighbouring homes leaving a buffer between the vegetation & the houses. Refer Section 5.4.



## Lidwina

## Reserve

### LEGEND

	NATURAL BUSHLAND: To be retained & protected		EXISTING PATH: Refer actions.
	RESERVE AREA		SHARED PATH: Refer actions.
	PROPOSED PICNIC AREA: Refer actions.		PROPOSED SIGNAGE
	SOUTH CREEK: Refer actions.		PROPOSED SHADE TREES
	RTA & DoP LAND: Refer actions.		EXISTING BRIDGE: To be retained & maintained.

### LOCALITY PLAN



ayling drury landscape architecture

for  
Warrigah Council

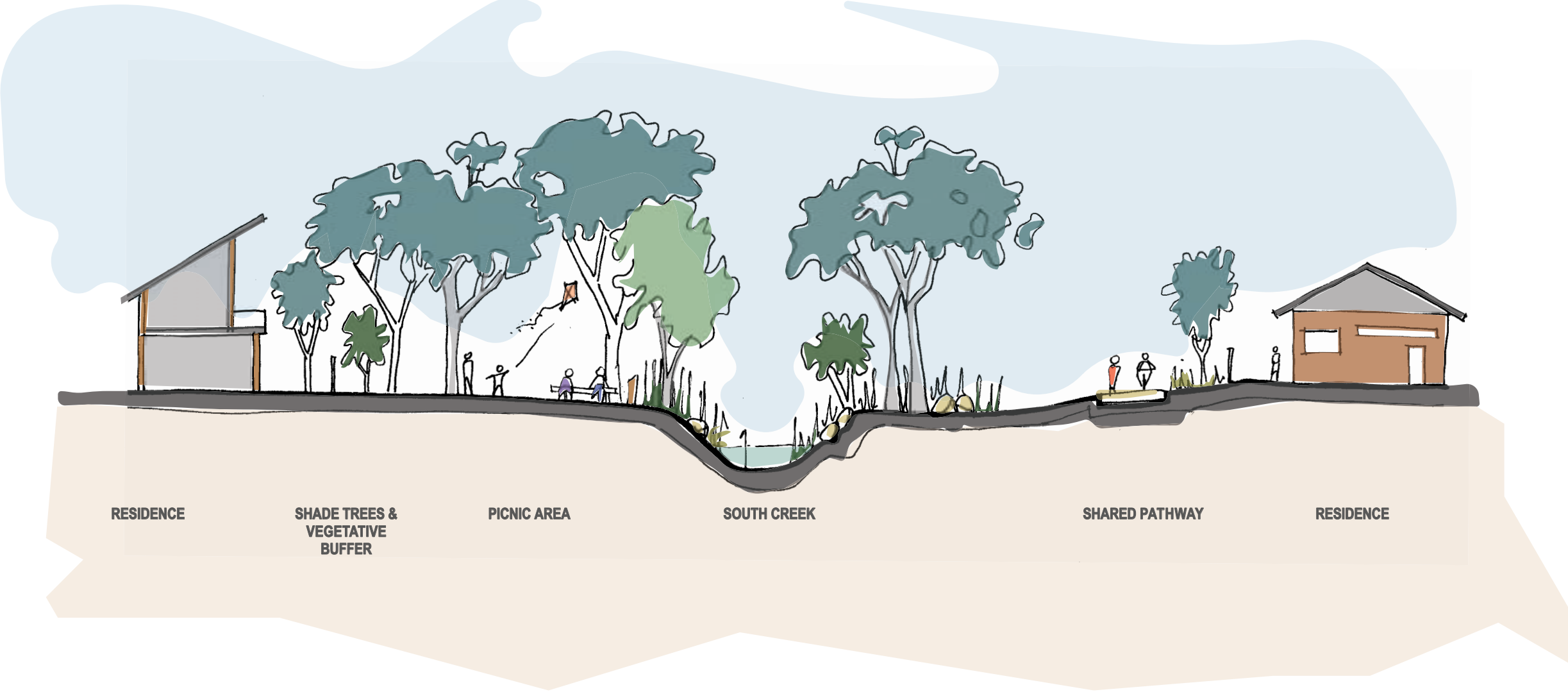
PROJECT  
Dee Why Valley & South Creek Open Space Corridor

AD0701

DRAWING  
AD0701-03

SCALE  
1:1250 @ A3

DATE  
May 2008



1 TYPICAL SECTION: PICNIC AREA & SOUTH CREEK