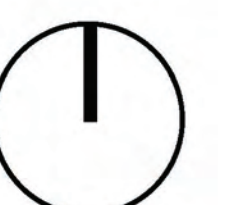


# CURL CURL BEACH LANDSCAPE MASTERPLAN





# CURL CURL BEACH LANDSCAPE MASTERPLAN

**KEY BENEFITS**

**OPEN SPACE**  
EXISTING = 25600m<sup>2</sup>  
PROPOSED = 29000m<sup>2</sup>

**NATURAL/LANDSCAPED AREA**  
EXISTING = 36200m<sup>2</sup>  
PROPOSED = 38450m<sup>2</sup>

**PARKING SPACES**  
**MAIN CAR PARK**  
EXISTING = 172  
PROPOSED = 174

**SOUTH CURL CURL SLSC**  
EXISTING = 29  
PROPOSED = 33

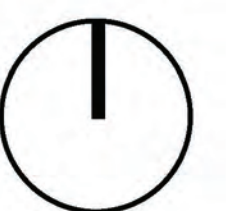
**COASTAL WALK CAR PARK**  
EXISTING = 20  
PROPOSED = 18

**PEDESTRIAN WALKS**  
CONCRETE = 860m  
DECOMPOSED GRANITE = 1290m  
BOARDWALK = 40m

**LENGTH OF FENCE**  
CONCRETE = 360m



- REMOVAL OF EXOTIC SPECIES TO BE REPLACED WITH NATIVE VEGETATION
- VEGETATION AREAS TO BE FENCED OFF TO PROTECT VEGETATION AND WILDLIFE
- MAINTAIN ACCESS TO LAGOON FOR DOG PLAY
- MAIN OFF LEASH DOG AREA. POTENTIAL FOR DOG PLAY EQUIPMENT
- ON LEASH DOG POINT AND INFORMATION SIGN
- DECOMPOSED GRANITE PATH AROUND OFF LEASH DOG PLAY AREA
- DECOMPOSED GRANITE MEETING POINT
- PEDESTRIAN LINK FROM BEACH TO ADAMS STREET OVAL AND ADJACENT PEDESTRIAN WALKS
- ON LEASH DOG POINT AND INFORMATION SIGN
- DECOMPOSED GRANITE SECONDARY PATH LINKING PRIMARY PATH TO DOG PLAY AREA
- OFF LEASH DOG PLAY AREA AND KICK-ABOUT SPACE. IMPROVEMENTS TO TURFED AREAS THROUGHOUT SITE
- REMOVAL OF EXOTIC SPECIES TO BE REPLACED WITH NATIVE VEGETATION
- ENTRY FEATURE AND LINK TO CURL CURL BEACH FROM ADJACENT STREETS. CLEARING OF EXISTING VEGETATION TO CREATE VIEWS
- PRIMARY DECOMPOSED GRANITE PATH LINKING THE NORTH AND SOUTH AREAS OF THE SITE
- REPLACEMENT OF SELECTED VEGETATION TO INCREASE SURVEILLANCE INTO SITE
- INVESTIGATE NEW ENTRY OPTIONS TO IMPROVE TRAFFIC FLOW AND SAFETY
- START OF OFF LEASH DOG AREA. INFORMATION SIGN AND CHANGE IN SURFACE
- IMPROVED EFFICIENCY AND SURFACE OF EXISTING PARKING
- IMPROVED CONNECTIONS FROM CAR PARK AND PRIMARY PATH TO BEACH
- EXTENSION OF GREEN SPACE WITH NEW SHELTERS AND BBQ FACILITIES TO CREATE VIEWING AREA
- PRIMARY CONCRETE PATH CONNECTION THROUGH SITE. CREATING SEPARATION FROM SAND DUNES
- BUS STOP TO REMAIN IN EXISTING LOCATION
- RAISED ACCESSIBLE RAMP ABOVE EXISTING DUNE VEGETATION
- FUTURE RESURFACING OF EXISTING PROMENADE IN FRONT OF SOUTH CURL CURL SLSC AND CONNECTION TO ROCK POOL
- FUTURE RESURFACING OF EXISTING CARPARK AND LOADING ZONE
- ACCESSIBLE RAMP CONNECTING COASTAL WALK TO CURL CURL BEACH WALK
- IMPROVED EFFICIENCY AND SURFACE OF EXISTING PARKING



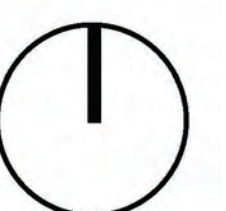
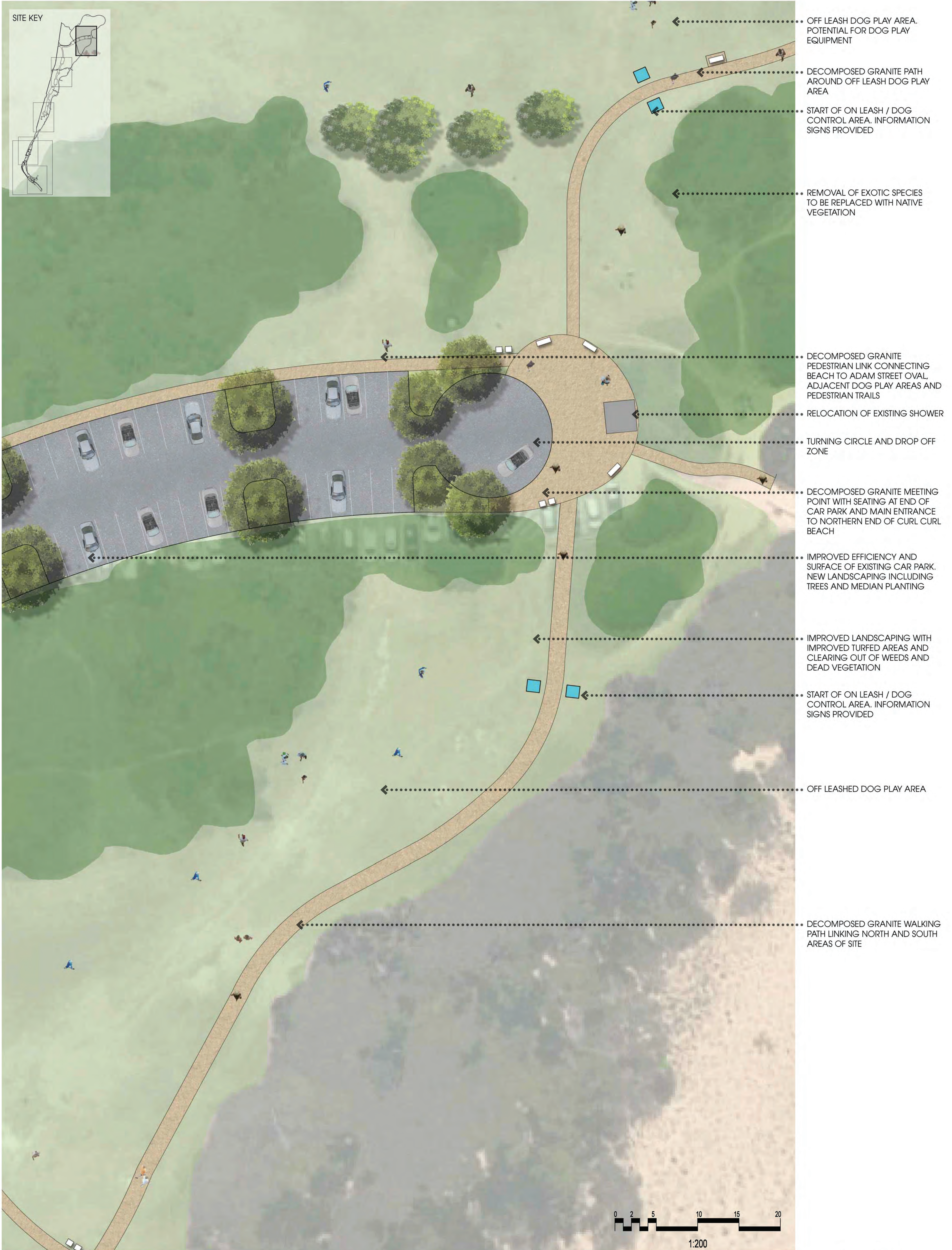


# CURL CURL BEACH LANDSCAPE MASTERPLAN - DOG PLAY AREAS





# CURL CURL BEACH LANDSCAPE MASTERPLAN - 03





# CURL CURL BEACH LANDSCAPE MASTERPLAN - 04



IMPROVED EFFICIENCY AND SURFACE OF EXISTING CAR PARK

KICK-ABOUT SPACE. IMPROVEMENTS TO TURFED AREAS THROUGHOUT SITE

REMOVAL OF EXOTIC SPECIES TO BE REPLACED WITH NATIVE VEGETATION

LINKING ROAD FOR NORTH AND SOUTH SECTIONS OF CAR PARK

CLEARING OF EXISTING DENSE VEGETATION AND REPLACE WITH SUITABLE TREES TO INCREASE SURVEILLANCE INTO SITE AND CREATE STRONG VIEWS FROM STREET

DECOMPOSED GRANITE PEDESTRIAN WALK LINKING NORTH AND SOUTH AREAS OF SITE

DECOMPOSED GRANITE PATH CONNECTING MAIN BEACH PATHWAY LINK TO CARRINGTON PARADE PATHWAY

PRIMARY PATH LINKING THE NORTH AND SOUTH AREAS OF THE SITE

ENTRY FEATURE TO CURL CURL BEACH. VIEWS FROM CARRINGTON PARADE, GRIFFIN ROAD AND ADAM STREET

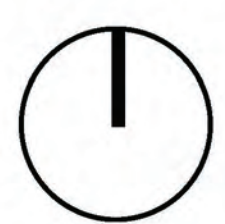
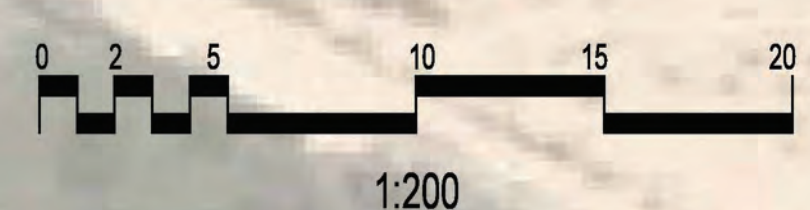
TURNING CIRCLE FOR VEHICLES TO MINIMISE CONGESTION WHEN LOOKING FOR PARKING

REMOVAL OF EXOTIC SPECIES TO BE REPLACED WITH NATIVE VEGETATION

PROTECTION OF ADJACENT DUNE VEGETATION

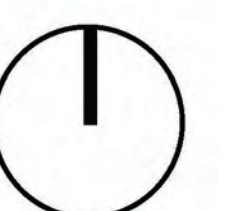
IMPROVED CONNECTIONS TO BEACH WALKWAYS

IMPROVED EFFICIENCY AND SURFACE OF EXISTING CAR PARK



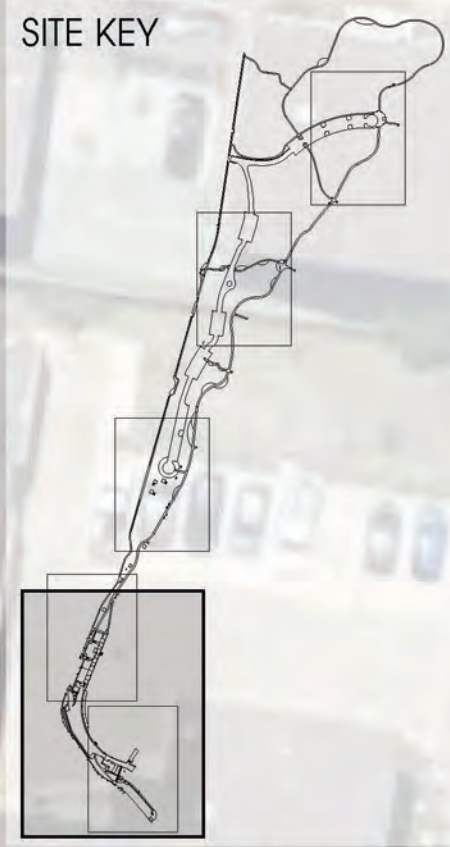


# CURL CURL BEACH LANDSCAPE MASTERPLAN - 05





# CURL CURL BEACH LANDSCAPE MASTERPLAN - 06

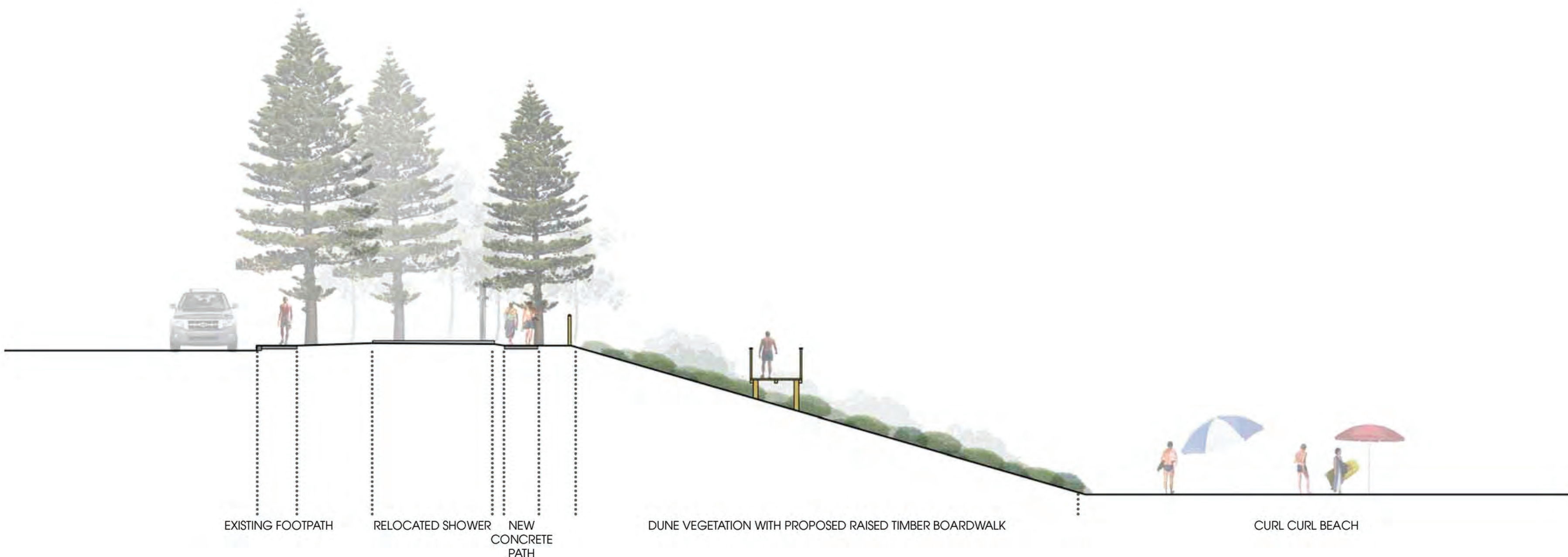


- PRIMARY PEDESTRIAN PATH CONNECTING SOUTHERN AND NORTHERN AREAS OF SITE
- RELOCATION OF EXISTING SITE SHOWERS
- 1 : 14 RAISED ACCESSIBLE RAMP OVER DUNE VEGETATION
- MAINTAIN EXISTING RAMP ACCESS
- UPGRADE EXISTING SITE FURNITURE AND LIFEGUARD VIEWING AREA
- MAINTAIN EXISTING STAIR ACCESS FROM CARRINGTON PARADE TO BEACH PROMENADE
- FUTURE RESURFACING OF EXISTING PROMENADE
- IMPROVED OUTDOOR DINING
- NEW STAIR CONNECTION FROM CARRINGTON PARADE. SEPARATING PEDESTRIAN AND VEHICULAR ACCESS
- ADJUSTED ENTRY RAMP TO CAR PARK FROM CARRINGTON PARADE TO ACCOMMODATE NEW PEDESTRIAN CONNECTION
- SCREENING FOR EXISTING BIN STORAGE AREA
- IMPROVED EFFICIENCY AND SURFACE OF EXISTING PARKING AREA AND LOADING ZONE
- FUTURE RESURFACING OF EXISTING PROMENADE AND CONNECTION TO ROCK POOL
- 1 : 13 ACCESSIBLE RAMP CONNECTING TOP CAR PARK
- WIDENING OF EXISTING STAIRS TO ROCK POOL
- VIEWING POINT WITH SEATING
- 1 : 13 ACCESSIBLE RAMP CONNECTING EXISTING COASTAL WALK TO CURL CURL BEACH AND PROPOSED PEDESTRIAN LINK
- NEW RETAINING WALL TO ALLOW FOR RECONFIGURATION OF CAR PARK
- NEW VIEWING AREA AND MEETING POINT AT END/BEGINNING OF COASTAL WALK
- IMPROVED EFFICIENCY AND SURFACE OF EXISTING CAR PARK ALLOWING EASY TURN AROUND POINT

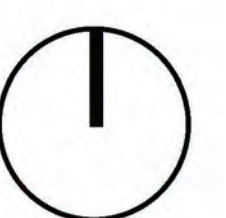




# CURL CURL BEACH LANDSCAPE MASTERPLAN - 07

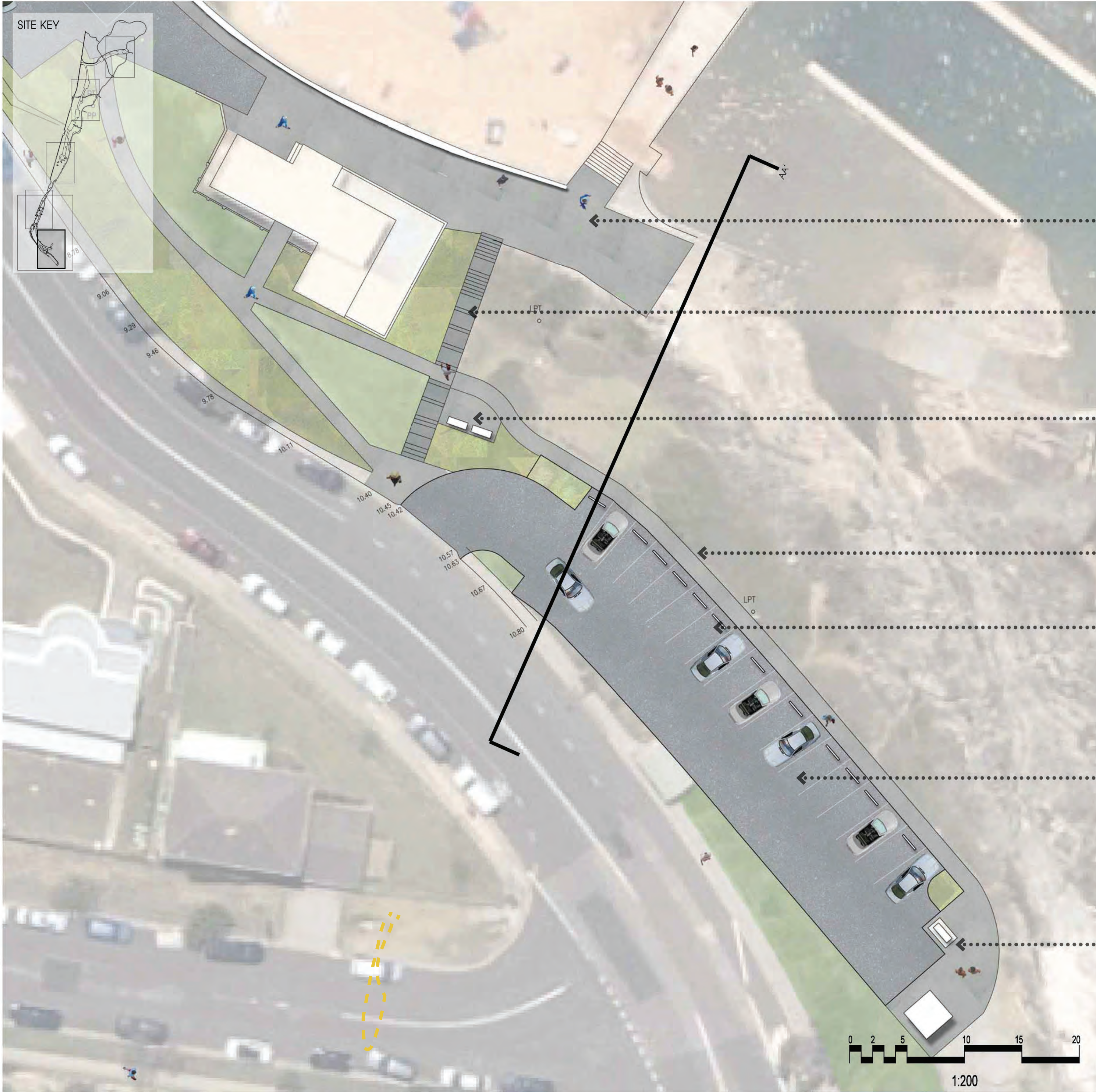


SECTION AA' - 1 : 100

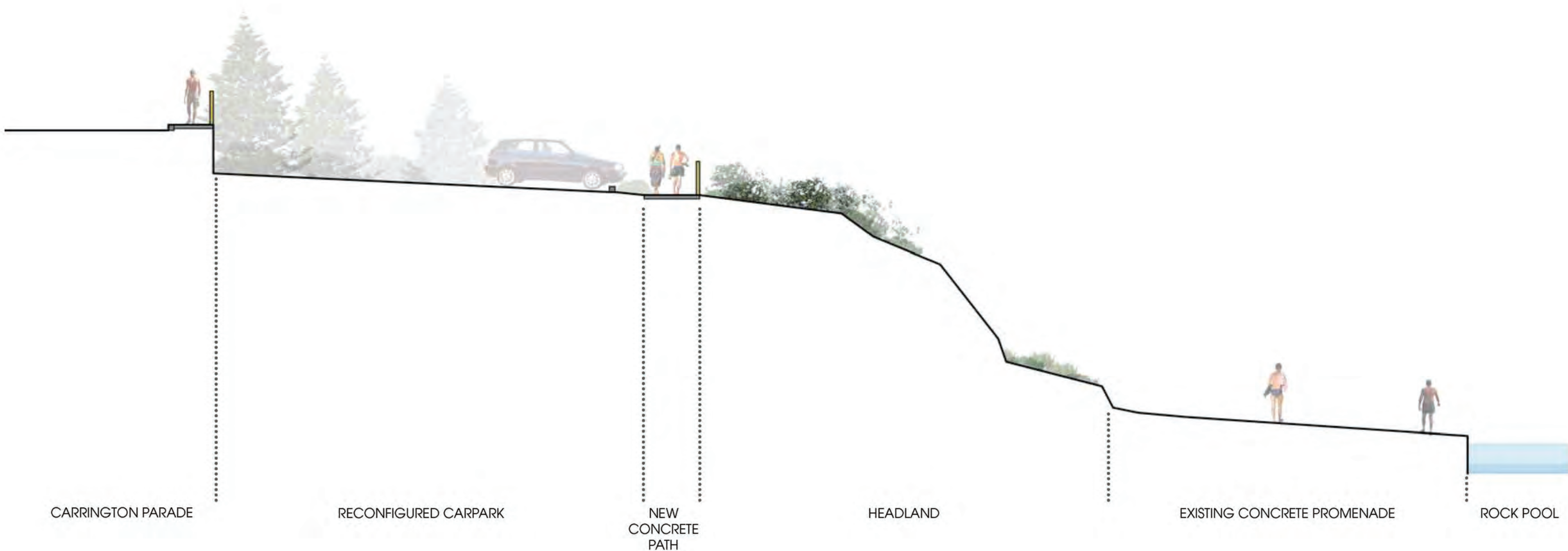




# CURL CURL BEACH LANDSCAPE MASTERPLAN - 08



- IMPROVED SURFACE TREATMENT TO EXISTING PROMENADE AND CONNECTION TO ROCK POOL
- WIDENING OF EXISTING STAIRS TO 1500mm WIDE
- VIEWING POINT WITH SEATING
- 1 : 13 ACCESSIBLE RAMP CONNECTING TOP CAR PARK AND COASTAL WALK TO CURL CURL BEACH
- NEW WHEEL STOPS TO ACT AS BARRIER FOR PEDESTRIAN WALK
- IMPROVED EFFICIENCY AND SURFACE OF EXISTING CAR PARK, MAINTAINING VIEWS TO BEACH
- BEGINNING/END OF EXISTING COASTAL WALK. NEW SEATING AND SHELTER TO CAPTURE SURROUNDING COASTAL VIEWS



SECTION AA' - 1 : 100

